



HCZ-10763

Seat No. _____

B. Arch. (Sem. IX) Examination

November / December - 2017

History of Architecture - VI

Time : 2 Hours]

[Total Marks : 80

Instructions :

- (1) Answer ANY TWO questions from SECTION - 1.
- (2) SECTION - 2 is compulsory.
- (3) Draw neat sketches where necessary.
- (4) Answer each question precisely.

SECTION - 1

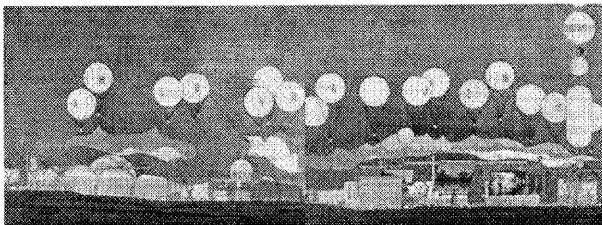
20

- 1 *Congress International d'Architecture Moderne* was an organization of the architects of the Modern Movement between 1928-1959. To communicate its ideology, the CIAM has held congresses and meetings, performed exhibitions and published the results of the congresses while Team 10 was a group of architects and other invited participants who assembled starting in July 1953 at the 9th Congress of C.I.A.M. and created a schism within CIAM by challenging its doctrinaire approach to urbanism. **10**

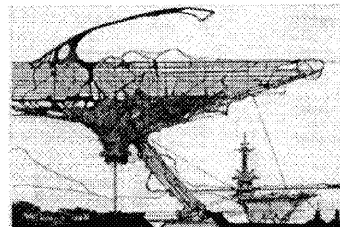
What was this schism about and how did TEAM 10 challenge the doctrinaire approach of the CIAM ?

2

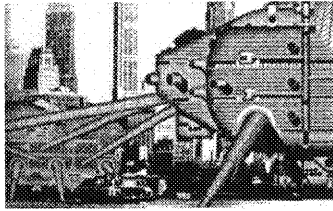
10



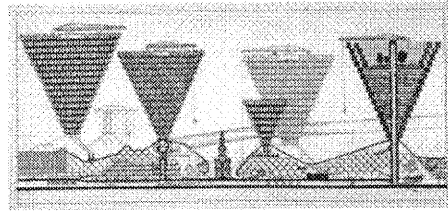
(a)



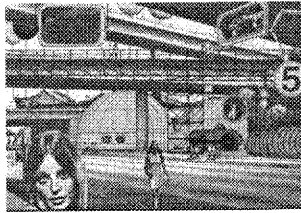
(b)



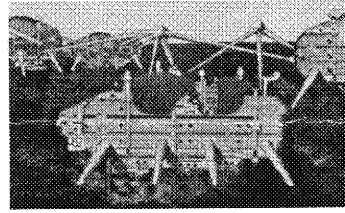
(c)



(d)



(e)



(f)

Identify the images and explain in brief, the significance of the ideas behind its conception.

(If any two images represent the same ideas, you don't need repeat explanation again. Write a single explanation common to both the images)

3 *End of Modernism ?* **10**

Elaborate on this phrase along with example of one or more architect's work.

4 **Postmodern architecture** is a style or movement which emerged in the 1960s as a reaction against the **modern architecture**, particularly in the international style advocated by Le Corbusier and Ludwig Mies van der Rohe. **10**

Explain one of the alternative ideologies (Structuralism or Deconstruction) that came up as a response to the modernist architecture.

- 1 "Architecture is the reconciliation between ourselves and the world and the mediation takes place through the senses". 20

In reference to the theoretical concept of phenomenology, explain any one of the following :

- (a) Sense of a Place
- (b) Lived Space
- (c) Sensuousness of Space

Also represent one of the place that is close to your heart or you visit it frequently in reference the above mentioned themes in the A3 sheet.

(the method of representation **MUST NOT** include any conventional ways of representation i.e. plan, sections, elevations)

- 2 Given to you is a plan of IPSA. Propose the design for a which is a required extension for the current set up.
- (A) Identify the essence (or the major architectural concerns) that you want to continue in the extension. 10
- Assume any one of the following *post-modernist ideology* based on which you must propose the design for the workshop. (Structuralism, Phenomenology, Brutalism, Site specific response, Hi-Tech, Deconstruction)
- (B) Derive an idea reflecting your understanding of the **assumed ideology** and portray it in diagrams. Use minimal text where necessary. 10
- (C) Conceptualize the built form of the workshop based on the derived idea. 10
- (D) Draw a schematic Plan **OR** a Section of the proposed workshop, with context. 10

The area for the proposed workshop has been shown in the drawing above. It measures 21.7 m by 29 m.

The workshop would be having hands-on experimentation, exploration of materials, model making and prototyping. The workshop has dedicated facilities for working in Wood, Metal, Ceramic, Textile, Model-making and a Fabrication-Lab.

